

# TRACER

ULTRA LITE



**PRIME TIME**  
Manufacturing

*"No Sacrifices"*



**Tracer**

**Tracer Executive**

TRACER TRAVEL TRAILERS  
[www.primetimerv.com](http://www.primetimerv.com)





• 2700 RES Fall River Décor

At Prime Time, we gave our design team very specific direction when creating Tracer, *"Build a lightweight travel trailer without sacrificing style, comfort, or convenience."* We asked them to, *"Develop floorplans that were user-friendly and desirable, but still easy-to-tow."* We put a stake in the ground and demanded that, *"Tracer have residential features, huge windows, and premium storage capabilities."* We said, *"Let's break new ground and build an ultralite trailer that exceeds even the most seasoned RV enthusiast expectations."* There was one rule when we designed the Tracer Ultralite - **"No Sacrifices!"**





• 3150 BHD Blackberry Décor



• 2700 RES Grand U-Dinette

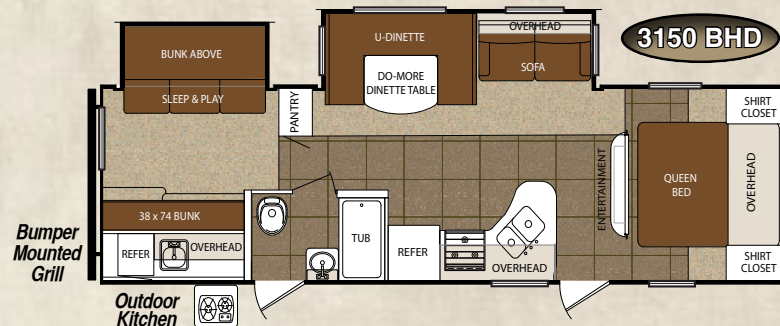
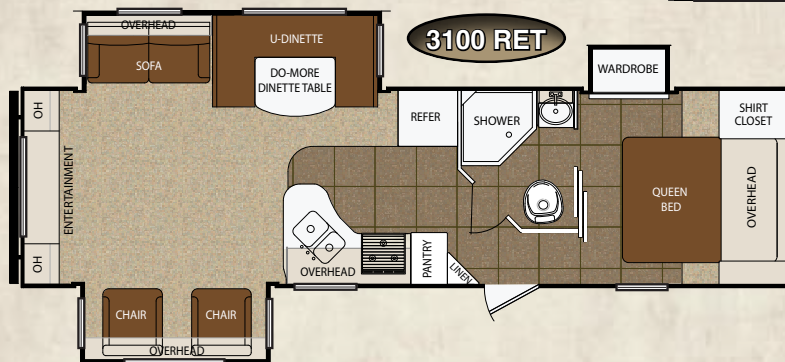
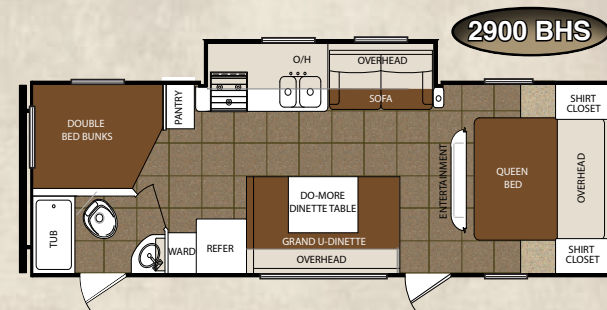
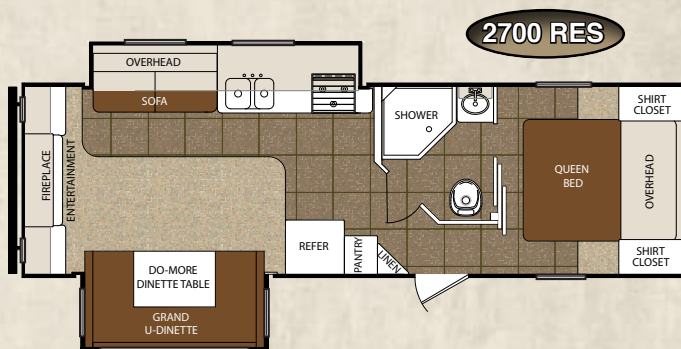
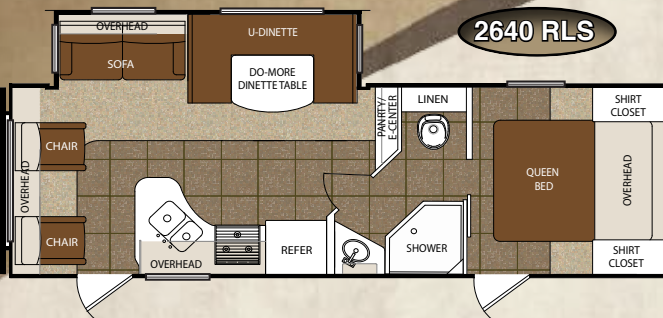






## Tracer Executive

The Tracer Executive represents the pinnacle of Ultralite innovation featuring wide open, spacious layouts that are often thousands of pounds lighter than traditional floorplans. The Executive Series offers premium upgrades like Solid Surface Countertops, a 26" LCD Television, Slam Latch Baggage Doors, and a Universal Docking Station. Of course, great looking, residential styling and durable fabrics are standard features on every Prime Time recreational vehicle. Now you can have all the features and the floorplan of your choice in a lightweight easy-to-tow Tracer Executive.



The 3150 BHD is one of our most popular floorplans for hundreds of reasons. On the inside, the popular Sleep & Play is well designed for family fun during the day and functional, comfortable sleeping at night. The Outdoor Kitchen with innovative Swing Arm Grill ensures that convenience is never out of reach with its huge 4 Cubic Foot Refrigerator, easy-to-store 2 Burner Range, Running Water, and Sink Bowl.

SPECIFICATIONS	2500 RBS	2640 RLS	2700 RES	2900 BHS	3100 RET	3150 BHD
Length	28' 7"	29' 5"	30' 8"	31' 5"	TBD	34' 0"
Height	10' 10"	10' 10"	10' 10"	10' 10"	TBD	10' 10"
Hitch	567 lbs.	637 lbs.	612 lbs.	683 lbs.	TBD	687 lbs.
Ship Weight	5,380 lbs.	5,756 lbs.	5,821 lbs.	5,688 lbs.	TBD	6,750 lbs.
Carrying Capacity	2,150 lbs.	1,854 lbs.	1,752 lbs.	1,957 lbs.	TBD	2,736 lbs.

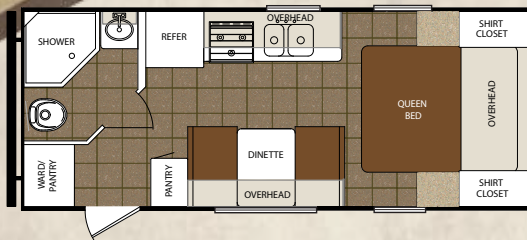




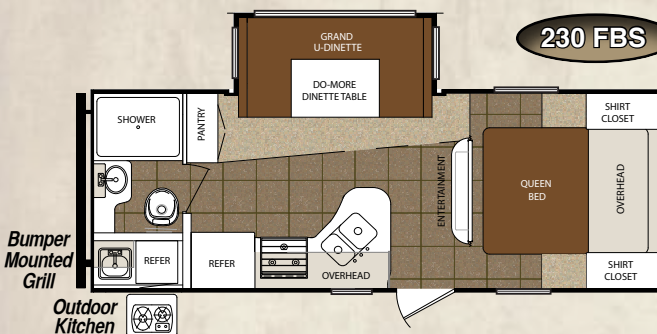
# TRACER

## ULTRA LITE

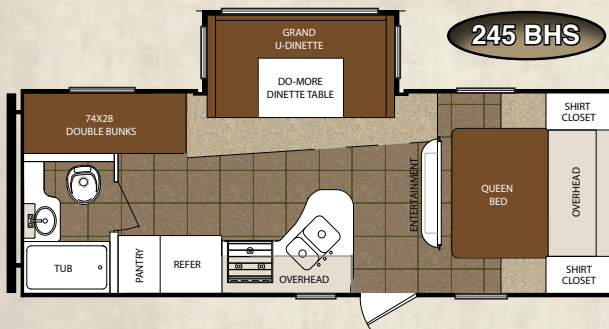
210 FB



230 FBS



245 BHS



SPECIFICATIONS	210 FB	230 FBS	245 BHS
Length	24' 0"	25' 2"	26' 10"
Height	10' 8"	10' 8"	10' 8"
Hitch	413 lbs.	621 lbs.	631 lbs.
Ship Weight	3,906 lbs.	4,810 lbs.	4,998 lbs.
Carrying Capacity	2,069 lbs.	2,773 lbs.	2,577 lbs.

### Tracer

Offered in three popular models, the original Tracer ultralite offers an unbeatable combination of light weights, value, and great looks. Even if you're on a budget, there will be no need to sacrifice as the Tracer series is standard with designer styling, fantastic storage, huge windows, and upgraded features like an Outside Kitchen, 32" x 40" Super Sized Shower, and Prime Time's exclusive Grand U-Dinette ensemble. Our engineers have included smart design and painstaking attention to detail to ensure each of our Tracer floorplans are clearly built with no sacrifices.

## OUTDOOR CONVENIENCE

- An Outside Kitchen with a Bumper Mounted Swing Arm Grill offers plenty of outdoor convenience on the 230 FBS.



• 230 FBS Outside Kitchen

## I N D O O R E L E G A N C E

- Tracer offers several unique features including this elegant entertainment center with rotating 26" LCD Television. (some models)



• Entertainment Center



CONSTRUCTION	TRACER	EXECUTIVE
• Gel Coated Fiberglass Exterior	S	S
• ETERNABOND CONSTRUCTION Featuring:	S	S
<i>* Laminated Aluminum Framed Side Walls R-11</i>	S	S
<i>* Laminated Aluminum Framed End Walls R-11</i>	S	S
<i>* Laminated Aluminum Framed Main Floor R-14</i>	S	S
<i>* Laminated Aluminum Framed Slideout Walls &amp; Roof</i>	S	S
• 3/8" Walk On Roof Decking With Double Insulation R-14	S	S
• Snow Load Approved 5" Truss Rafters	S	S
• One Piece Rubber Roof	S	S
• Thermal Package Plus	S	S
<i>* Enclosed and Heated Underbelly</i>	S	S
<i>* Heated Holding Tanks</i>	S	S
<i>* Enclosed Dump Valves</i>	S	S
<i>* Heated Dump Valves</i>	S	S
• 96" Exterior Width	S	S
• 30 Amp Power Cord	S	S
• Fresh Water Capacity - 48 Gallons	S	S
• Waste Water Capacity - 30 Gallons	S	S
• Gray Water Capacity - 30 Gallons	S	S
EXTERIOR FEATURES & EQUIPMENT		
• A&E Awning	S	S
• A&E Electric Awning		S
• (4) Manual Stabilizer Jacks	S	
• (2) Electric Stabilizer Jacks		S
• Bus Style Slam Latch Baggage Doors		S
• Huge Pass Thru Storage with Oversized Doors	S	S
• Universal Docking Station	S	S
• Black Tank Flush	S	S
• Outside Shower with Recoil Hose	S	S
• Spare Tire with Carrier	S	S
• Black, Dark Tinted, Radius Safety Glass Windows	S	S
• Roof Mounted Antenna	S	S
• Cable Ready	S	S
• Satellite Ready	S	S
• Exterior Television Cable Connection	S	S
• Exterior GFI	S	S
• LP Quick Connect	S	S
• Outside Speakers	S	S
• Aerodynamic Fiberglass Front Cap	S	S
• Front Diamond Plate Rock Guard	S	S
• "EZ Lube" Greasable Axle Hubs	S	S
• EZ Tow Wide Track Suspension (N/A 210FBS)	S	S
• Radial Tires	S	S
• Amber Porch Light	S	S
• Extended Drip Spouts	S	S
• Hitch Light	S	S

# STANDARDS AND OPTIONS

INTERIOR FEATURES & EQUIPMENT	TRACER	EXECUTIVE
• Raised Panel Kitchen Overhead Cabinet Doors	S	S
• 19" LCD TV	210 Only	
• 26" LCD TV	S	S
• Solid Wood Core Cabinets	S	S
• Pre-drilled and Screwed Cinnamon Finish Cabinetry	S	S
• Oil Rubbed Bronze Hardware	S	S
• Solid Surface Countertops		S
• Large Bowl Kitchen Sink	S	S
• Hi Rise Kitchen Faucet	S	S
• Spice Rack Valance	S	S
• Grand Booth Dinette with 72" Window (some models)	S	S
• Wall Border	S	S
• Residential Pleated Shades	S	S
• AM/FM/CD/DVD Stereo System with MP3 Plug In	S	S
• Residential Folding Sofa (Where Applicable)		S
• Residential Swivel Chairs (Where Applicable)		S
• Extended Height Toilet with Foot Flush	S	S
• Wooden Medicine Cabinet	S	S
• ABS Tub/Shower Surround	S	S
• 12 V Exhaust Fan In Bath	S	S
• "Evergreen" Select Foam Queen Size Mattress	S	S
• Quilted Bunk Matts (Some Models)	S	S
• Quilted Residential Bedspread	S	S
APPLIANCES		
• Large 2-Door Refrigerator	S	S
• 13,500 BTU Residential Ducted Air Conditioner	S	S
• 6 Gal Gas/Electric Water Heater	S	S
• Quick Recovery Mode for Water Heater	S	S
• Hi Capacity Gas Furnace	S	S
• Large Oven	S	S
• Range Hood with Light and Exhaust	S	S
• 55 AMP Converter	S	S
• Water Heater Bypass	S	S
• Hi Capacity Water Pump	S	S
• Microwave	S	S
SAFETY		
• CO Detector	S	S
• LP Detector	S	S
• Fire Extinguisher	S	S
• Dual Hitch Safety Chains	S	S
• Smoke Alarm	S	S
OPTIONS		
• Outside Kitchen Cook Center (some models)	O	O
• Free Standing Dinette with 4 Chairs		O
• 15,000 BTU Air Conditioner	O	O



# TRACER

ULTRA LITE



Aerodynamic Front Fiberglass Cap



Front Diamond Plate Rock Guard



Bus Style Slam Latch Baggage Doors



EZ Tow Wide Track Suspension



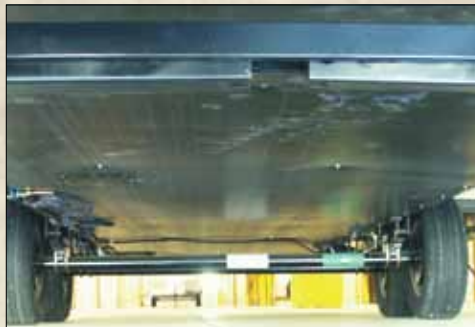
Universal Docking Station



"One Touch" Electric Stabilizer Jacks



"One Touch" Electric Awning



Thermal Package Plus



ETERNABOND® Construction



Extended Drip Spouts



Exterior Entertainment Hook-Up



LP Quick Connect



High Rise Triple Entry Steps



Easy Access Low Point Drains

# 2010 & 2011 DSI QUALITY CIRCLE AWARD WINNER

Prime Time Manufacturing is proud to be recognized as an industry leader in value, reliability, and overall quality by the Recreational Vehicle Dealers Association. This was accomplished by committing ourselves to "A Higher Standard" in design, construction, testing, and customer service. Check us out - we know you'll be impressed!



Seal Tech Air Pressure Test



ETERNABOND Construction



Rain Bay



Seek-A-Leak Pressure Test



65 Point Secondary PDI



Web Based Customer Service



Executive Quality Audits



Advanced Engineering



www.primetimerv.com



## Coach-Net<sup>®</sup>

RV TECHNICAL & ROADSIDE ASSISTANCE

With the purchase of this recreational vehicle, you receive the benefit of our exclusive around the clock Emergency Roadside Assistance and Product Support Plan. Through our partnership with Coach-Net, you have access 24 hours a day, 7 days a week to RVDA/RVIA Trained Technician and Service personnel to assist with service during your time of need.

HERE'S JUST A SAMPLE OF THE BENEFITS\*

- ✓ Mobile Mechanic
- ✓ Free Jump Starts
- ✓ Tire Changes
- ✓ \$2000 Trip Interruption
- ✓ Appointment Assistance
- ✓ Lock Out Service
- ✓ Fuel Delivery
- ✓ Service Assistance
- ✓ Custom Trip Routing and Maps
- ✓ 24 Hour Emergency Messaging

\*Exclusions and restrictions apply. See member guide for details.



Forest River, Inc. encourages our customers to purchase their Forest River products from a local dealership whenever possible for the following reasons:

- 1) Forest River, Inc. dealers are independently owned and operated businesses so priority service and scheduling is at their discretion and is often provided to customers that purchased their unit at that dealership.
- 2) Purchasing locally allows customers to establish meaningful relationships with a dealer, enhancing the RV experience through assistance with product questions, user tips or RV regulations for your state or country, and much more!
- 3) Canadian customers must meet requirements to bring an RV purchased out of the country to their home. These requirements may involve additional inspections and certifications, taxes and fees. Your local Canadian Dealer is a professional at meeting these requirements.
- 4) Scheduling timely warranty repairs and adjustments through a local dealership provides far greater flexibility and convenience to you, the customer!

It is the goal of Forest River, Inc. that all of our RV owners fully enjoy the RV experience and that customer satisfaction meets or exceeds their expectations!



**Learn More**  
Scan this barcode using a QR Reader on your smart phone to learn more about Forest River.



A Berkshire Hathaway company.

All illustrations and specifications contained in this literature are based on the latest product information at time of publication. Prime Time Manufacturing reserves the right to make changes in prices, colors, materials, equipment and specifications at anytime, without notice, and assumes no responsibility for any error in this literature. All units are shipped F.O.B. point of manufacture.

F-66-367

© 2012 Forest River

Litho U.S.A.

DEALER